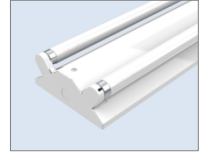


T8 LED Triangle Fitting With White Metal Reflector
Model: OS TMER 2x600mm / OS TMER 2x1200mm (Metal Reflector)


Metal Reflector (TMER)

Specifications & Technical Data

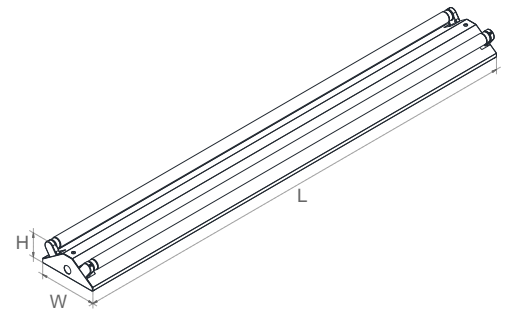
- Housing is Fabricated From Mild Steel (*Thickness 0.5mm*)
- White Metal Reflector (*Thickness 0.3mm*)
- Finished With Powder Electrostatically
- Stove-Coated With High Reflectivity White Epoxy
- Lampholder of Polycarbonate & Bronze
- Twist-Lock Lampholder For Reliable Contact
- Pre-Connected With PVC Wire
- Connecting Devices of Nylon 3 Way x 2.5mm²
- Degree of Protection: **IP20**
- Type of Protection: Class 1
- Mounting Method: Surface Ceiling / Wall

Optional:

- VITALITE VECK 18/T8 LED **or** VEL 120/ECK
- 3 Hours Duration Emergency Powerpack

SSR - Suspension Rod

- SSR 305 (305mm / 12")
- SSR 460 (460mm / 18")
- SSR 610 (610mm / 24")



Model	Luminaires					Dimension - mm			Current (A)	P.F. (λ)
	No. of Lamp	Power	Beam Angle	Reflector	Base	L	W	H	± 5 %	>
OS TMER 2x600mm	2	2 x 8W	160°	White Metal	G13	612	152	63	0.07	> 0.90
OS TMER 2x1200mm	2	2 x 14W	160°	White Metal	G13	1222	152	63	0.12	> 0.90

Lamp (AC Input 100-240V, 50/60Hz, Athd < 15%)

Brand	Code	Type	Base	Lumens (lm)	Power (W)	CCT (K)	CRI (Ra)	SDCM	Current	P.F.	Lifespan (Hrs)
TOSHIBA	T8 LEDtube PRO 600mm 8W 4000K (RLDL0282C0840G1EX1)	T8 LED	G13	1100lm	8W	4000K	≥ 80Ra	≤ 6	0.035	> 0.9	50000Hrs
TOSHIBA	T8 LEDtube PRO 600mm 8W 6500K (RLDL0282C0865G1EX1)	T8 LED	G13	1100lm	8W	6500K	≥ 80Ra	≤ 6	0.035	> 0.9	50000Hrs
TOSHIBA	T8 LEDtube PRO 1200mm 14W 4000K (RLDL0284C1440G1EX1)	T8 LED	G13	2100lm	14W	4000K	≥ 80Ra	≤ 6	0.06	> 0.9	50000Hrs
TOSHIBA	T8 LEDtube PRO 1200mm 14W 6500K (RLDL0284C1465G1EX1)	T8 LED	G13	2100lm	14W	6500K	≥ 80Ra	≤ 6	0.06	> 0.9	50000Hrs